

DERWENT
Inspiring Artists Worldwide

STEP-BY-STEP DEMONSTRATION

DERWENT PASTELS

Bold, broad colour at a stroke

Blue Bell Path (Finished drawing 6½" x 9")



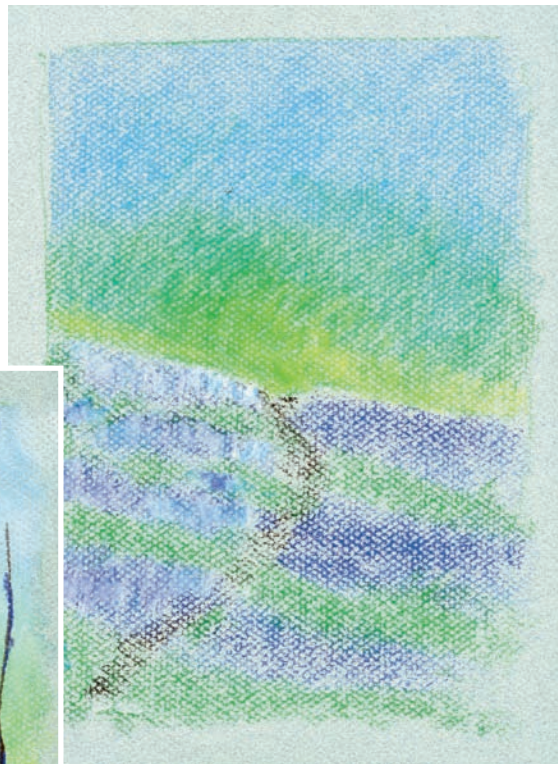
INTRODUCTION

These square shaped blocks of firm, smooth pastel are perfect for creating broad, bold strokes of colour. Available in 36 vibrant colours, they work beautifully with Derwent Pastel pencils. The assorted tins of 12 and 24 include a free Derwent blender.

MATERIALS USED:

Derwent Pastels used:
76B Forest Green, 75B Hookers Green, 66B Chocolate, 29B Ultramarine, 25B Dark Violet, 1B Zinc Yellow, 72B Chinese White, 72D Blending White

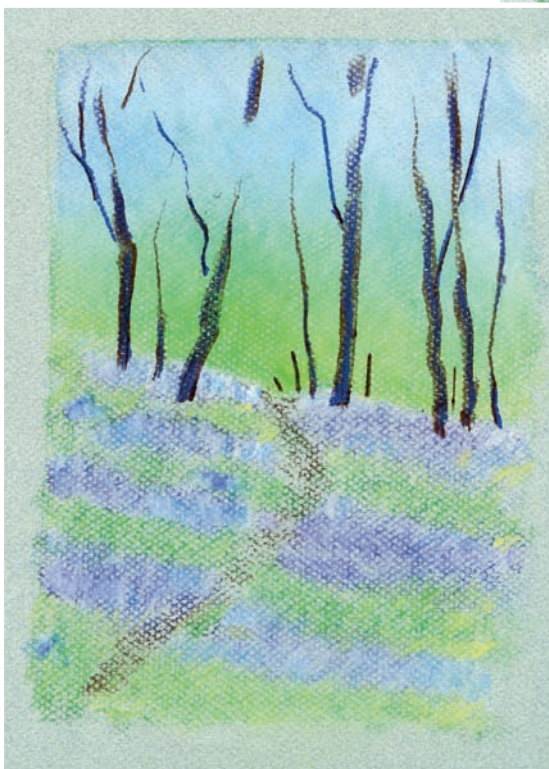
Canson blue/grey paper 120lbs
Derwent Graphic 2B pencil



1 Using the textured side of the paper and a flat side of the pastel, block in the sections of colour using 29B Ultramarine at the top for the sky, merging into 75B Hookers Green then introduce some 1B Zinc Yellow on top of the green creating a ridgeline. This will naturally merge slightly as you blend the two colours together.

Using 66B Chocolate, lightly position the path using the top edge of the pastel. Then using the side of the pastel, block in swathes/sections of grass and blue bells using 75B Hookers Green, 29B Ultramarine and 25B Dark Violet.

Introduce some 72B Chinese White onto the top of the 29B Ultramarine and 25B Dark Violet using small vertical strokes, as shown on the left of the drawing. This will soften and blend the colours.



2 Continue to use the 72B Chinese White until all of the blue bells are softened. Add 1B Zinc Yellow to the green grasses in the same way, brightening them. Keep all these strokes fairly upright using the pastel in the direction that the flowers and grasses grow.

Using the 72B Blending White, press firmly and blend the entire sky area above the ridgeline as shown.

Using a combination of the 25B Dark Violet and 66B Chocolate position the trees and fence. Use the top edge of the pastel to create the width of the tree trunks, turning it slightly to make the stroke narrower or broader.

For more tips, techniques and product information visit www.pencils.co.uk

DERWENT

Inspiring Artists Worldwide

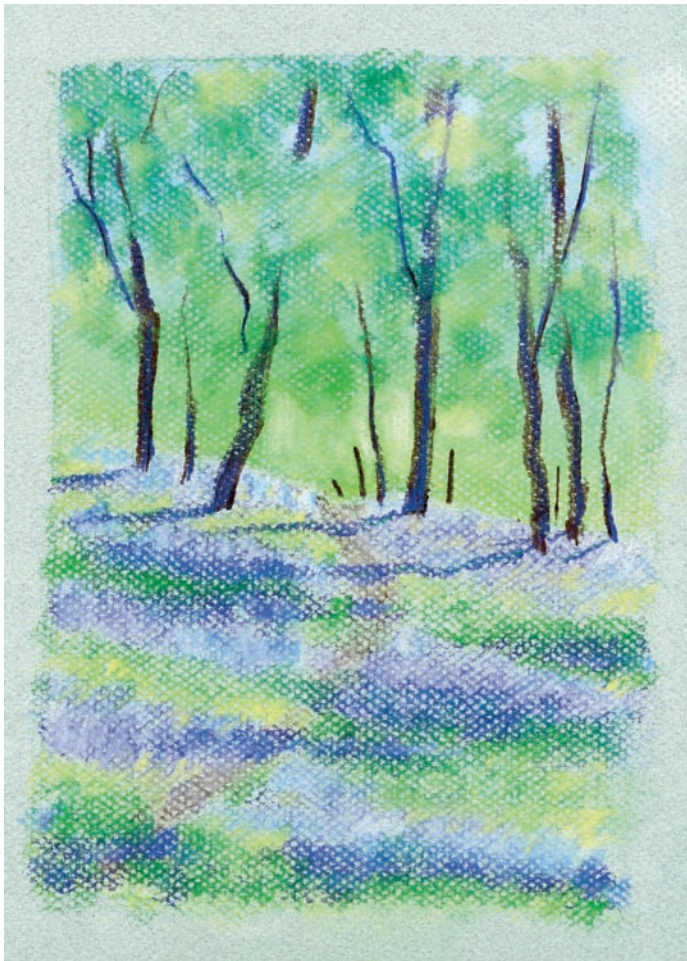
STEP-BY-STEP DEMONSTRATION

DERWENT PASTELS

Bold, broad colour at a stroke

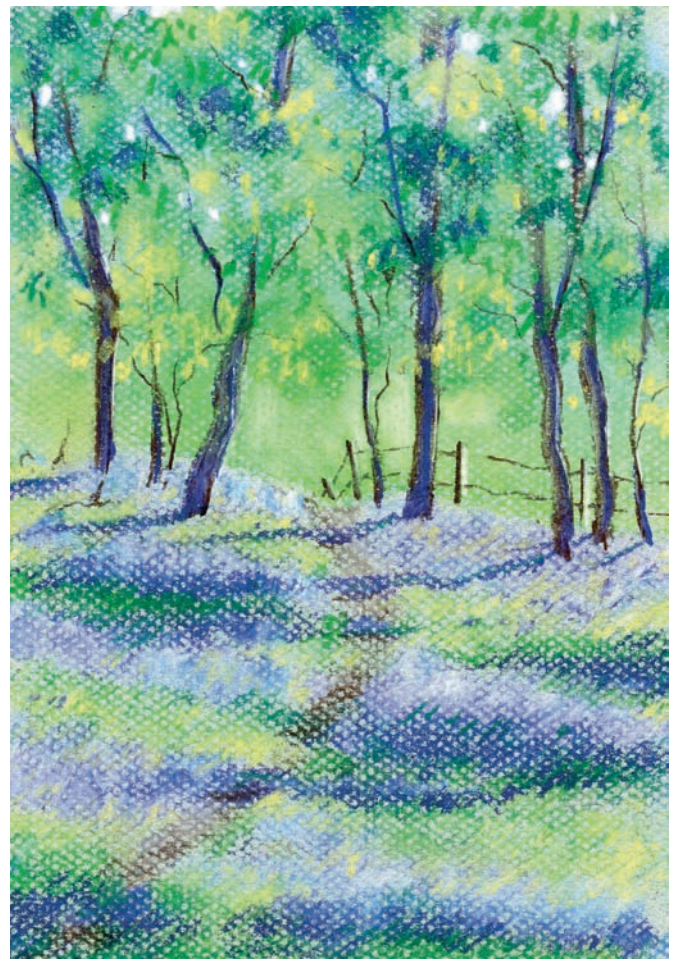
Blue Bell Path (Finished drawing 6½" x 9")

Drawings and techniques by Fiona Peart



3 Use the 72D Blending White to soften the path. Then begin with the foliage – using 75B Hookers Green and ‘stabbing strokes’ with the square edge of the pastel, create the area of tree foliage. Introduce 1B Zinc Yellow in the same way, then 76B Forest Green in the darker areas. The texture of the paper will now return giving an impression of foliage.

Using 25B Dark Violet and the top edge of the pastel add the shadows of the trees and darken the blue bells that will appear to be in shadow. Then add 76B Forest Green to the same areas in shadow. You should now have definite bands of light and dark flowers.



4 Using 1B Zinc Yellow and both Greens (75B Hookers green and 76B Forest Green), build up the foliage using a corner of the pastel. This makes definite ‘marks’ suggesting leaves.

Using 72B Chinese White, and a firm pressure position some bright dappled light highlights between the foliage and on the side edge of the fence posts and trees.

Using the top edge of the 66B Chocolate pastel press firmly to imprint the fence wire behind the trees.

Add a little 25B Dark Violet to the dark areas in the foliage.

Build up the foreground light areas with 1B Zinc Yellow and 72B Chinese White, retaining the bands of light.

For more tips, techniques and product information visit www.pencils.co.uk